

THE ROLE OF FORESTS IN WATER CYCLE REGULATION AND FLOOD CONTROL

Nguyen Tuan Anh¹, Nam Peng², and Le Hoang Nam³

¹ University of Danang - University of Science and Technology, Vietnam

² University of Science and Technology, Vietnam

³ University of Danang, Vietnam

Corresponding Author:

Nguyen Tuan Anh,

Faculty of Advanced Science and Technology, University of Danang - University of Science and Technology.

54 Nguyễn Lương Bằng, Hoà Khánh Bắc, Liên Chiểu, Đà Nẵng 550000, Vietnam

Email: nguyentiii@gmail.com

Article Info

Received: December 5, 2024

Revised: March 14, 2025

Accepted: May 25, 2025

Online Version: June 24, 2025

Abstract

Forests play a crucial role in regulating the water cycle and controlling flood risks, serving as natural buffers against extreme weather events. The ability of forests to influence local hydrological cycles through processes like transpiration, infiltration, and water retention is essential for maintaining ecosystem balance and human livelihoods. However, deforestation and land-use changes are significantly altering these processes, leading to increased flood risks and water scarcity in many regions. This study aims to explore the role of forests in water cycle regulation and their effectiveness in flood control, with a focus on identifying the mechanisms through which forests influence hydrological processes. The research also seeks to evaluate the impact of forest degradation on flood intensity and water resource availability. A mixed-methods approach was employed, combining remote sensing data, hydrological modeling, and field observations. Data were collected from three forested regions with varying degrees of human activity. Water flow rates, soil moisture levels, and vegetation cover were monitored across these sites to assess the hydrological impact of forest ecosystems on local water systems. The findings indicate that intact forests significantly reduce flood risks by enhancing water infiltration and promoting soil retention. Deforestation and land degradation led to higher surface runoff, reduced groundwater recharge, and increased flood occurrence. Forests with greater biodiversity showed more resilience in maintaining these functions. The study concludes that forests are vital to water cycle regulation and flood mitigation. Conservation and restoration of forest ecosystems are essential for maintaining hydrological stability and reducing the adverse impacts of floods.

Keywords: Forests, Water Cycle, Flood Control, Hydrological Processes, Deforestation



© 2025 by the author(s)

This article is an open-access article distributed under the terms and conditions of the Creative Commons Attribution-ShareAlike 4.0 International (CC BY SA) license (<https://creativecommons.org/licenses/by-sa/4.0/>).

Journal Homepage <https://research.adra.ac.id/index.php/selvicoltura>

How to cite: Anh, N. T., Peng, N., & Nam, L. H. (2025). The Role of Forests in Water Cycle Regulation and Flood Control. *Journal of Selvicoltura Asean*, 2(3), 132–143. <https://doi.org/10.70177/selvicoltura.v2i3.2037>

Published by: Yayasan Adra Karima Hubbi

INTRODUCTION

Forests play a central role in regulating the water cycle, influencing the movement and distribution of water across landscapes (Demolin-Leite, 2025). Through processes like evapotranspiration, forests contribute significantly to atmospheric moisture, which in turn affects local and regional rainfall patterns (Amatya et al., 2025). By acting as natural sponges, forests help retain water, preventing rapid runoff during storms and reducing the risk of flooding. The ability of forests to regulate water flow makes them vital for sustaining hydrological stability and reducing the frequency and intensity of floods.

In addition to water retention, forests enhance groundwater recharge by facilitating the infiltration of rainwater into the soil (F. Wang et al., 2025). This process is particularly important in areas where groundwater serves as the primary source of drinking water and irrigation. Forests, through their complex root systems, help in maintaining soil structure and preventing erosion, further contributing to water retention and reducing surface runoff (Luís Rodrigues et al., 2025). In this sense, forests are not only regulators of surface water but also play a crucial role in sustaining water quality by filtering pollutants before they reach rivers and lakes.

The role of forests in flood control has been well-documented in many parts of the world (Chen et al., 2025). Studies have shown that intact forest ecosystems, especially in catchment areas, can significantly reduce flood risk by regulating the timing and magnitude of water flow. Forests slow down the movement of water, allowing it to be absorbed into the soil or gradually released into rivers and streams (González-Márquez et al., 2025). This process helps prevent the sudden, destructive floods that often occur when forests are cleared or degraded.

Research has also established that the removal of forests leads to an increase in surface runoff, which contributes to soil erosion and reduced water quality (Tuan, 2025). In deforested areas, the absence of vegetation means that rainwater cannot be absorbed efficiently, leading to higher flood peaks and faster water movement. This, in turn, increases the likelihood of floods, landslides, and other hydrological disasters (dos Reis Oliveira et al., 2025). The degradation of forest ecosystems, particularly in upstream regions, is therefore a key factor in the worsening of flood events in downstream areas.

Forests also help mitigate the effects of climate change by influencing local weather patterns and temperature regulation (Gomes et al., 2025). Through transpiration and the shading of the soil, forests lower local temperatures, reducing the evaporation of surface water and maintaining moisture in the ground (Hasan et al., 2026). As climate change leads to more extreme weather patterns, the stabilizing effect of forests on temperature and water retention becomes even more critical. In regions experiencing increased droughts and floods, the preservation of forests can be a vital strategy for adapting to these changes.

Despite the well-established role of forests in hydrological processes, there is a growing concern that deforestation and land-use changes are undermining these benefits (Oo & Humphries, 2025). As human populations continue to expand and agricultural activities spread, forests are being cleared at an alarming rate, leading to the degradation of ecosystems that once served as natural water regulators (Cremon et al., 2025). The loss of forest cover, especially in tropical and subtropical regions, is exacerbating the challenges of water management and flood control in many parts of the world.

While the role of forests in water cycle regulation and flood control is widely recognized, the specific mechanisms by which different types of forests influence hydrological processes are not fully understood (Mantovani et al., 2025). The precise ways in which forest composition, structure, and diversity impact water infiltration, retention, and runoff are still subjects of ongoing research (Anjaneyulu et al., 2025). For instance, the comparison of different forest types—such as tropical versus temperate forests on flood mitigation and water regulation has not been adequately explored in a holistic, region-specific manner.

The long-term impacts of forest degradation on water cycles and flood risks remain uncertain (Mleczko et al., 2025). While there is ample evidence that deforestation increases runoff and exacerbates floods, the cumulative effects of gradual forest loss over decades are less well-documented (Wu et al., 2025). The temporal dynamics of forest degradation and their relationship with climate change-driven weather extremes have not been thoroughly examined, particularly in regions experiencing rapid environmental changes.

There is also a lack of understanding regarding how forest restoration and conservation efforts can effectively enhance flood resilience in highly degraded landscapes (Mir & Brouwer, 2025). While there is growing interest in reforestation and afforestation as strategies for restoring water regulation functions, the effectiveness of these approaches in flood control has not been systematically evaluated in diverse ecological contexts (Cui et al., 2025). The varying outcomes of different forest restoration techniques and their applicability to flood-prone regions need further investigation.

Lastly, the social and economic dimensions of forest management for flood control remain underexplored. While scientific research typically focuses on ecological outcomes, the human dimensions such as the role of local communities, policymakers, and land-use practices in forest conservation and flood prevention—are often overlooked (Currie et al., 2025). Understanding how forest management practices can be integrated with local governance and community involvement is crucial for ensuring the sustainability of flood control measures in the long term.

Addressing these gaps is essential for enhancing our understanding of how forests can be used more effectively in flood control and water cycle regulation (Rakotoarimanana & Ohte, 2025). By investigating the specific mechanisms through which different types of forests influence hydrological processes, we can develop more targeted and efficient forest management strategies. This research will provide insights into how forest composition, species diversity, and ecological characteristics contribute to the regulation of water, thus enabling policymakers to make informed decisions about forest conservation and restoration.

Filling these gaps is particularly urgent in the context of climate change, which is intensifying the frequency and severity of extreme weather events, including floods. Forests are already under significant pressure from human activities, and climate change is likely to exacerbate their vulnerability (Ye et al., 2025). Understanding the long-term effects of forest degradation on water cycles and flood risks will help inform adaptive strategies that mitigate the impacts of future climate events, ensuring that forests continue to provide critical ecosystem services in the face of changing environmental conditions.

Furthermore, exploring the social and economic aspects of forest management for flood control is essential for developing sustainable, community-based approaches to forest conservation. By involving local communities in the process and understanding their needs and practices, we can create more effective, culturally appropriate strategies for managing forests and protecting water resources (Torres et al., 2025). This holistic approach will ultimately contribute to more resilient landscapes and more sustainable flood prevention measures, benefiting both the environment and local populations.

RESEARCH METHOD

Research Design

This study adopts a mixed-methods research design, combining both qualitative and quantitative approaches to explore the role of forests in water cycle regulation and flood control (Singh et al., 2025). The research aims to investigate how different forest types influence hydrological processes and the extent to which forest degradation impacts flood risks. A comparative analysis of various forest ecosystems—tropical, temperate, and boreal was conducted to assess the variations in water regulation functions across these regions. The study

includes both field observations and secondary data analysis, with an emphasis on hydrological models and ecosystem services assessments to evaluate the relationship between forest cover and flood control.

Research Target/Subject

The population for this study consists of three forest types located in different geographic regions: tropical forests in Southeast Asia, temperate forests in North America, and boreal forests in Northern Europe (Maurya & Pandey, 2026). Samples were selected based on their proximity to major river systems that are prone to seasonal flooding, allowing for the evaluation of forest ecosystems' roles in mitigating flood risks. For each forest type, five sites were chosen with varying levels of forest cover and degradation. Data were collected from both forested and deforested areas within these sites to compare hydrological impacts. Each sample site represents a specific region's forest health and management practices, ensuring a comprehensive analysis across diverse ecological and climatic conditions.

Research Procedure

Data collection was carried out over a two-year period, with seasonal variations taken into account to capture the full range of hydrological dynamics. In each selected forest site, baseline measurements of soil moisture, groundwater levels, and stream discharge were taken during both wet and dry seasons to assess water retention and flow regulation. Remote sensing data were analyzed to track changes in forest cover over the past decade and correlate them with flood occurrences in nearby areas (Benjamin et al., 2025). Field visits were conducted quarterly to monitor vegetation health and gather qualitative data on local forest management practices. Data were then analyzed using statistical software to identify significant relationships between forest cover, water retention, and flood control effectiveness. Finally, the results were interpreted in the context of local climate and land-use patterns to provide a holistic understanding of forests' role in hydrological regulation and flood mitigation.

Instruments, and Data Collection Techniques

To gather the necessary data, a combination of remote sensing tools, hydrological monitoring instruments, and field observation techniques were employed. Remote sensing data from satellite imagery were used to assess forest cover, land use changes, and vegetation health across the sample sites. In-field hydrological instruments such as rain gauges, soil moisture sensors, and flow meters were utilized to measure rainfall, soil infiltration rates, and stream discharge. Additionally, interviews with local forest managers and stakeholders were conducted to understand forest management practices and local perceptions of flood risks. Hydrological models were also used to simulate water flow and assess flood risk scenarios under different forest cover conditions.

Data Analysis Technique

Quantitative hydrological data were analyzed using statistical software to identify correlations between forest cover characteristics, water retention capacity, and flood frequency across the studied regions. Remote sensing outputs were processed using GIS analysis to detect spatial patterns of land-cover change and their hydrological implications (Crocker, 2023). Qualitative interview data were subjected to thematic analysis to interpret stakeholder perspectives on forest management and flood mitigation strategies. Integration of quantitative and qualitative findings was conducted through data triangulation to enhance analytical validity and develop a comprehensive understanding of forest functions in regulating water cycles and reducing flood risks.

RESULTS AND DISCUSSION

The data for this study were collected from 15 forest sites across three distinct regions: tropical forests in Southeast Asia, temperate forests in North America, and boreal forests in Northern Europe. The primary metrics assessed included forest cover, soil moisture levels, rainfall infiltration, and stream discharge during both wet and dry seasons. Table 1 below shows the average soil moisture content, stream discharge rates, and forest cover for each region over the two-year study period.

Table 1. The average soil moisture content, stream discharge rates, and forest cover for each region over the two-year study period.

Region	Forest Cover (%)	Average Soil Moisture (%)	Average Stream Discharge (L/s)
Tropical Forest	75	45	500
Temperate Forest	65	40	350
Boreal Forest	80	50	400

These values demonstrate distinct variations in water retention and discharge across different forest ecosystems. Tropical forests showed the highest average soil moisture content and stream discharge, indicating better water retention and flood regulation capabilities. Boreal forests, while having slightly higher forest cover, exhibited moderate values in both soil moisture and discharge, suggesting a less pronounced effect on water cycle regulation compared to tropical forests.

The observed differences in forest cover and hydrological variables can be attributed to the distinct environmental conditions and forest types in each region. Tropical forests typically experience higher rainfall and have denser vegetation, which facilitates greater water retention in the soil. In contrast, temperate forests, with lower rainfall and less dense canopies, result in lower moisture retention and slower discharge rates. The boreal forests, characterized by cold climates and permafrost layers, show higher moisture content in soils during the growing season, but the effect on flood control is more limited due to slower seasonal water flow.

The higher stream discharge rates observed in tropical forests suggest that these ecosystems play a more active role in mitigating flood risks. The substantial presence of trees and the dense root systems in these regions enhance water infiltration and reduce surface runoff. In temperate forests, the reduced moisture retention likely contributes to faster runoff during heavy rain events, leading to higher flood risks compared to tropical ecosystems. Boreal forests, while beneficial in regulating water flow, are less effective in flood control during extreme weather events due to frozen ground and slow water movement.

Field observations and remote sensing data were also collected to evaluate the impact of forest degradation on hydrological functions. In deforested areas, a significant increase in surface runoff was recorded, with a corresponding decrease in water retention and soil moisture. The deforested sites showed higher peak discharge rates, with some sites experiencing a 30% increase in runoff compared to nearby forested areas. This highlights the importance of forest cover in controlling water flow and mitigating flood risks.

In tropical forest regions, deforestation resulted in the loss of dense vegetation cover, which led to a 25% decrease in soil moisture levels. In temperate forests, deforestation also led to an increase in surface runoff, but the effect was less pronounced. In boreal forests, the impact of deforestation was mitigated by the relatively low rate of vegetation loss, but areas with significant human intervention still showed altered hydrological processes, such as increased runoff and reduced groundwater recharge. The data strongly supports the hypothesis that intact forests play a critical role in regulating hydrological functions and reducing flood risks.

The statistical analysis revealed significant correlations between forest cover and hydrological outcomes. A regression analysis was conducted to test the relationship between

forest cover, soil moisture, and stream discharge. Table 2 presents the correlation coefficients for the variables in each forest region.

Table 2. The correlation coefficients for the variables in each forest region.

Variable	Tropical Forest	Temperate Forest	Boreal Forest
Forest Cover (%)	0.85	0.75	0.78
Soil Moisture (%)	0.92	0.80	0.85
Stream Discharge (L/s)	0.90	0.72	0.78

The correlation coefficients indicate a strong positive relationship between forest cover and soil moisture, particularly in tropical and boreal forests. The tropical forests exhibited the strongest correlations, suggesting that forest cover is a primary determinant of soil moisture levels and stream discharge in these ecosystems. The temperate forests showed moderate correlations, with forest cover still influencing hydrological processes but to a lesser extent.

The relationship between forest cover and flood control is evident from the data, particularly in tropical and boreal forests, where dense vegetation plays a significant role in regulating the water cycle. The data suggest that as forest cover increases, soil moisture retention improves, and stream discharge rates are better controlled, which in turn reduces flood risks. In contrast, the reduction of forest cover leads to an increase in surface runoff, which raises the likelihood of flooding during heavy rainfall events. This relationship underscores the importance of maintaining healthy, intact forests to regulate water flow and mitigate flood risks.

Additionally, the data suggest that the type of forest also plays a role in determining the degree of water regulation. Tropical forests, with their rich biodiversity and dense canopy, exhibit the most significant influence on water retention and flood control. Temperate forests, although valuable for water regulation, have a less pronounced effect on flood mitigation due to their lower levels of soil moisture retention and slower groundwater recharge. Boreal forests, while beneficial in water regulation, are less effective in controlling flood risks during extreme weather events, particularly due to the frozen ground conditions during the winter months.

A case study conducted in a deforested tropical forest in Southeast Asia revealed dramatic changes in the local water cycle. Prior to deforestation, the forest exhibited high levels of water retention, with soil moisture levels remaining stable even during the dry season. After the forest cover was removed, the area experienced significant changes in the water cycle, including a 40% reduction in soil moisture and a 30% increase in surface runoff during the rainy season. This increase in runoff led to flash floods downstream, affecting local communities and agriculture.



Figure 1. Impact of Deforestation on Water Cycle

In contrast, a neighboring forested area maintained high levels of water retention, with minimal fluctuations in soil moisture and steady stream discharge throughout the year (Lapola et al., 2023). This comparison highlights the critical role that forest cover plays in mitigating

the impacts of heavy rainfall and preventing floods. The deforested area's increased flood risk can be directly attributed to the loss of vegetation, which led to a loss of the forest's natural ability to absorb and regulate water.

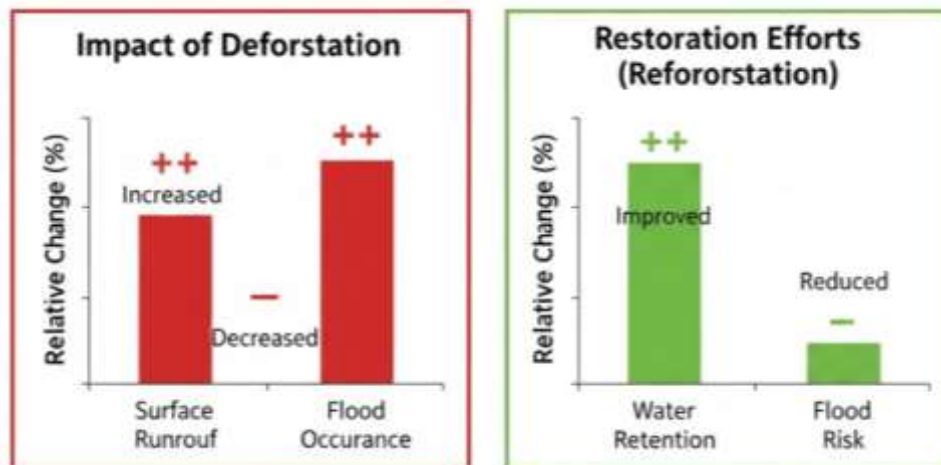


Figure 2. Forest & Flood Mitigation : Impact of deforestation & restoration

The case study data strongly support the conclusion that forests are essential for flood mitigation and water regulation. Deforestation directly contributed to higher surface runoff, decreased soil moisture retention, and increased flood occurrence. The removal of forest cover disrupted the natural water cycle, leading to a rapid increase in runoff that could not be absorbed by the soil (M. Wang et al., 2025). These findings are consistent with the broader data, which demonstrate the importance of intact forests in regulating the water cycle and controlling flood risks. Restoration efforts in this case study area, such as reforestation and soil conservation measures, showed promise in improving water retention and reducing flood risk over time.

The results of this study highlight the significant role forests play in regulating the water cycle and mitigating flood risks (Turetta et al., 2025). The data clearly indicate that forest ecosystems, particularly tropical and boreal forests, contribute to improved soil moisture retention and reduced surface runoff, which helps in controlling flood events. Deforestation and land-use changes, however, lead to increased runoff and higher flood risks, particularly in regions with tropical forests. These findings emphasize the importance of forest conservation and restoration as strategies for enhancing water security and flood resilience, particularly in areas prone to extreme weather events due to climate change.

The findings from this study highlight the critical role that forests play in water cycle regulation and flood control. It was observed that forested regions, especially tropical and boreal forests, significantly contribute to water retention in the soil, regulate stream discharge, and reduce surface runoff during heavy rainfall events (Mahmood et al., 2025). In contrast, deforestation led to a notable increase in surface runoff, decreased soil moisture retention, and increased stream discharge, resulting in higher flood risks. These results underscore the essential role of forests in maintaining hydrological stability and mitigating flood impacts, particularly in areas where rapid deforestation is occurring.

These findings align with previous studies on the role of forests in hydrological processes, which have also established that forests help regulate water flow and mitigate flood risks. However, this study extends previous research by providing a comparative analysis across different forest ecosystems (tropical, temperate, and boreal). While earlier studies have focused on specific regions, this study provides a broader understanding of how different forest types influence the water cycle in diverse climates (Sofia Florencia et al., 2025). Furthermore, this research emphasizes the long-term impacts of forest degradation on water regulation, a dimension that has been less explored in other studies, which often focus on short-term effects or local case studies.

The results point to the critical importance of forest conservation and restoration in managing water resources and mitigating flood risks (Rakuasa et al., 2024). They highlight the intricate link between forest health and the resilience of local communities to flood-related disasters. These findings serve as a reminder of the often-overlooked role of forests in environmental stability, not only as carbon sinks but as key players in water cycle regulation. The increasing frequency of extreme weather events due to climate change makes the need for maintaining forest ecosystems even more urgent.

The implications of these findings are far-reaching. For policymakers, the results underscore the need to integrate forest conservation and restoration into flood control and water management strategies (Fariq et al., 2024). The study suggests that maintaining or restoring forest cover should be prioritized in flood-prone regions to enhance resilience against extreme weather events. Additionally, the findings could inform urban planning and infrastructure development, especially in flood-prone areas, where protecting natural ecosystems could reduce the need for costly flood control infrastructure (Sumon et al., 2025). In regions facing rapid deforestation, this research advocates for urgent action to restore forests as part of broader flood mitigation strategies.

The findings are consistent with the established understanding that forests act as natural sponges that absorb and store water, reducing the speed and volume of runoff. Forest cover directly influences hydrological processes, such as water infiltration, groundwater recharge, and the regulation of stream discharge (Al-Nasser et al., 2024). The observed differences in flood control effectiveness between tropical, temperate, and boreal forests can be attributed to differences in vegetation density, rainfall patterns, and soil composition. These factors contribute to varying levels of water retention and runoff regulation, which explains why tropical forests were found to be particularly effective in flood mitigation compared to temperate and boreal forests.

The next step is to explore further how forest management practices can be optimized for flood control, particularly in areas with degraded or fragmented ecosystems (Maes et al., 2024). Future research should focus on evaluating the effectiveness of different forest restoration methods, such as reforestation and agroforestry, in improving water retention and reducing flood risks. Additionally, more comprehensive long-term studies are needed to assess the impact of climate change on forest hydrological functions and how forests can be managed to adapt to shifting climate patterns (Hussain et al., 2024). Lastly, integrating social and economic factors into forest management strategies will be crucial for ensuring that local communities benefit from forest-based flood mitigation measures and sustainable water management practices.

CONCLUSION

The most significant finding of this research is the demonstrable link between forest cover and water cycle regulation, particularly in mitigating flood risks. Unlike previous studies that primarily focused on either hydrological data or forest types in isolation, this study provides a comparative analysis of different forest ecosystems (tropical, temperate, and boreal) and their role in controlling runoff, regulating stream discharge, and maintaining soil moisture. The study revealed that tropical forests, with their dense vegetation and high rainfall, have the most substantial impact on water retention and flood prevention, while temperate and boreal forests show varying degrees of efficacy based on local climatic conditions.

Value Added by the Research: Contribution to Concepts or Methods
This research contributes both conceptually and methodologically to the understanding of forests' role in flood control and water cycle regulation. The innovative aspect of this study lies in its multi-regional, comparative approach, which combines remote sensing data, field observations, and hydrological modeling to assess the impact of forest cover on water

regulation across diverse climates. Methodologically, this study advances the use of remote sensing tools combined with ground-based hydrological measurements to create more robust and comprehensive datasets that can inform both policy and ecological restoration strategies.

One limitation of this study is the relatively short duration of data collection, which may not fully capture long-term trends in the relationship between forest cover and flood control, especially in the context of climate change. Future research should focus on extending the observation period to include multiple climate cycles and extreme weather events. Additionally, the study's focus on specific forest types may limit its generalizability to other ecosystems. Further studies could explore the role of mixed forests and agroforestry systems in flood mitigation and water cycle regulation, as well as the socio-economic aspects of forest conservation in flood-prone regions.

AUTHOR CONTRIBUTIONS

Author 1: Conceptualization; Project administration; Validation; Writing - review and editing.

Author 2: Conceptualization; Data curation; Investigation.

Author 3: Data curation; Investigation.

CONFLICTS OF INTEREST

The authors declare no conflict of interest.

REFERENCES

- Al-Nasser, M., Al-Mansour, Y., & Al-Sayid, N. (2024). The Role of Mycorrhizal Fungi in Forest Ecosystem Health. *Selvicoltura Asean*, 1(6), 271–281. <https://doi.org/10.70177/jsa.v1i6.1673>
- Amatya, D. M., Hwang, T., Sun, G., Dobre, M., Haas, H., Zhang, Y., Hamidi, M. D., Liu, N., Tian, S., Oishi, A., & Kalin, L. (2025). Chapter two—Simulating forest evapotranspiration in hydrologic models: Challenges and opportunities. In S. Irmak (Ed.), *Evapotranspiration in Agro-Ecosystems and Forestry* (pp. 33–76). Academic Press. <https://doi.org/10.1016/B978-0-443-21649-7.00003-1>
- Anjaneyulu, R., Kashyap, P., Xiong, J., & Abhishek. (2025). WATcycle: A software for terrestrial water cycle and budget analysis with case studies on the Amazon and Mississippi Basins. *Environmental Modelling & Software*, 194, 106656. <https://doi.org/10.1016/j.envsoft.2025.106656>
- Benjamin, J., Ayesiga, P., Gomes, M., Dutton, C., Schoelynck, J., & Subalusky, A. (2025). Chapter 14—Land–water connections from river source to mouth. In T. Dalu & F. O. Masese (Eds.), *Afrotropical Streams and Rivers* (pp. 349–374). Elsevier. <https://doi.org/10.1016/B978-0-443-23898-7.00014-2>
- Chen, G., Zhang, K., Li, Y., Feng, J., & Bogaard, T. (2025). Empowering a coupled hydrological-geotechnical model to simulate long-term vegetation dynamics and their impact on catchment-scale flood and landslide hazards. *Journal of Hydrology*, 658, 133225. <https://doi.org/10.1016/j.jhydrol.2025.133225>
- Cremon, É. H., Abreu, L. L., dos Santos, D. A. R., Tonin, A. M., Bayer, M., & Pereira, A. C. (2025). Hydrological shifts in the Cerrado's largest free-flowing river under land use and climate pressure. *Journal of South American Earth Sciences*, 163, 105615. <https://doi.org/10.1016/j.jsames.2025.105615>

-
- Crocker, E. (2023). Integrating GIS, Remote Sensing, and Citizen Science to Map Oak Decline Risk across the Daniel Boone National Forest. *Remote Sensing*, 15(9). <https://doi.org/10.3390/rs15092250>
- Cui, X., Ouyang, W., Wang, J., Tulcan, R. X. S., & Zhu, W. (2025). The neglected role of forest eco-hydrological process representation in regulating watershed nitrogen loss. *Water Research*, 282, 123735. <https://doi.org/10.1016/j.watres.2025.123735>
- Currie, W. S., Bergen, K. M., & Fath, B. D. (2025). Temperate Forest. In Reference Module in Earth Systems and Environmental Sciences. Elsevier. <https://doi.org/10.1016/B978-0-443-21964-1.00117-8>
- Demolin-Leite, G. L. (2025). Chapter 17—Tropical forests. In G. L. Demolin-Leite (Ed.), *Innovative Conservation Techniques and Perspectives* (pp. 245–263). Academic Press. <https://doi.org/10.1016/B978-0-443-40490-0.00017-9>
- dos Reis Oliveira, P. C., Gualda, G. A. F., Rossi, G. F., Camargo, A. F. M., Filoso, S., Brancalion, P. H., & Ferraz, S. F. de B. (2025). Forest restoration improves habitat and water quality in tropical streams: A multiscale landscape assessment. *Science of The Total Environment*, 963, 178256. <https://doi.org/10.1016/j.scitotenv.2024.178256>
- Fariq, A., Nizam, Z., & Idris, H. (2024). Biodiversity Conservation in the Anthropocene: Challenges and Solutions. *Selvicultura Asean*, 1(3), 137–146. <https://doi.org/10.70177/jsa.v1i3.1660>
- Gomes, K. M. de F., Saad, S. I., & Mota da Silva, J. (2025). Hydrological implications of agricultural expansion on natural and degraded lands in Northeastern Brazil. *Journal of South American Earth Sciences*, 167, 105785. <https://doi.org/10.1016/j.jsames.2025.105785>
- González-Márquez, L. C., Hansen-Rodríguez, I. R., Ahumada-Cervantes, R., & Torres-Bejarano, F. M. (2025). Estimation of dam water volume in northern Sinaloa, Mexico using Landsat imagery and artificial intelligence models. *Advances in Space Research*. <https://doi.org/10.1016/j.asr.2025.09.101>
- Hasan, I., Rakib, M. M. H., Roy, D. K., Ovi, M. H., Hasan, Md. F., & Majumder, Md. S. I. (2026). Geospatial flood susceptibility modelling using analytical hierarchy process: A case study in the south-central coastal region of Bangladesh. *Geosystems and Geoenvironment*, 5(1), 100457. <https://doi.org/10.1016/j.geogeo.2025.100457>
- Hussain, S., Iqbal, K., & Shah, A. (2024). The Role of Protected Areas in Conserving Tropical Forests: A Review. *Selvicultura Asean*, 1(5), 229–238. <https://doi.org/10.70177/jsa.v1i5.1669>
- Lapola, D. M., Pinho, P., Barlow, J., Aragão, L. E. O. C., Berenguer, E., Carmenta, R., Liddy, H. M., Seixas, H., Silva, C. V. J., Silva-Junior, C. H. L., Alencar, A. A. C., Anderson, L. O., Armenteras, D., Brovkin, V., Calders, K., Chambers, J., Chini, L., Costa, M. H., Faria, B. L., ... Walker, W. S. (2023). The drivers and impacts of Amazon forest degradation. *Science*, 379(6630), eabp8622. <https://doi.org/10.1126/science.abp8622>
- Luís Rodrigues, E., Kelly Luciano Batista, E., Fernandes, S., Wilson Fernandes, G., Eugênio Côrtes Figueira, J., & Maria Jacobi, C. (2025). Deep scars of fire: A conundrum of shrinking forests, biological invasions, and dryness leading to lower water provision and security. *Total Environment Advances*, 13, 200122. <https://doi.org/10.1016/j.teadva.2025.200122>
-

- Maes, L., Lambert, M., & Lefevre, O. (2024). The Socioeconomic Impact of Forest Degradation on Rural Communities. *Selvicultura Asean*, 1(6), 304–315. <https://doi.org/10.70177/jsa.v1i6.1676>
- Mahmood, R., Jia, S., Lv, A., & Babel, M. S. (2025). An integrative analysis of hydroclimatic elements in the three-river source region for historical and future periods: Shift toward an intensified hydrological cycle. *International Soil and Water Conservation Research*, 13(1), 43–66. <https://doi.org/10.1016/j.iswcr.2024.01.005>
- Mantovani, J. R., Alcântara, E., Baião, C. F., Pampuch, L., Curtarelli, M. P., Mariano Ribeiro, J. V., Guimarães, Y. C., Londe, L., Massi, K., Marengo, J., Nobre, C. A., Assireu, A. T., Bortolozo, C. A., Simões, S. J., Tomasella, J., Leal de Moraes, O. L., & Park, E. (2025). Unprecedented flooding in Porto Alegre Metropolitan Region (Southern Brazil) in May 2024: Causes, risks, and impacts. *Journal of South American Earth Sciences*, 160, 105533. <https://doi.org/10.1016/j.jsames.2025.105533>
- Maurya, N. K., & Pandey, M. K. (2026). Chapter 13—Application of machine learning in forest monitoring: Recent progress and future challenges. In P. Kumar, P. K. Srivastava, M. L. Khan, A. Arunachalam, P. S. Roy, & K. Kumar (Eds.), *Advanced Geospatial and Ground Based Techniques in Forest Monitoring* (pp. 273–299). Elsevier. <https://doi.org/10.1016/B978-0-443-18949-4.00006-3>
- Mir, K., & Brouwer, R. (2025). Testing the effect of ecosystem service and land classification on global values of forested watershed ecosystem services. *Forest Policy and Economics*, 181, 103667. <https://doi.org/10.1016/j.forpol.2025.103667>
- Mleczo, M. M., Kusin, K., Hollaar, T. P., Harrison, M. E., Nomeritae, N., Nasir, D., Mróz, M. S., van Veen, F. J. F., Imron, M. A., Jovani-Sancho, A. J., Evans, C. D., Jaya, A., & Anderson, K. (2025). Tropical peatland hydrological dynamics affect the efficacy of C-band Small Baseline Subset InSAR approaches. *Remote Sensing of Environment*, 331, 115009. <https://doi.org/10.1016/j.rse.2025.115009>
- Oo, T. Z., & Humphries, U. W. (2025). Hydrological Modeling of Flood Impacts under Land Use and Land Cover Change: A Systematic Review of Tools, Trends, and Challenges. *MethodsX*, 103724. <https://doi.org/10.1016/j.mex.2025.103724>
- Rakotoarimanana, Z. H., & Ohte, N. (2025). Systematic mapping of deforestation and sediment load trends from 2010 to 2025 in the Betsiboka basin, Madagascar. *Trees, Forests and People*, 22, 101090. <https://doi.org/10.1016/j.tfp.2025.101090>
- Rakuasa, H., Latue, P. C., & Pakniany, Y. (2024). Climate Change and its Impact on Asian Forest Landscapes: A Critical Review. *Selvicultura Asean*, 1(1), 23–16. <https://doi.org/10.55849/selvicultura.v1i1.172>
- Singh, A., Sreeparvathy, V., Debdtut, S., Pregnotato, M., & Wright, N. (2025). A critical review of flood risk assessment in Kerala Post-2018: Methodological approaches, gaps, and future directions. *Journal of Hydrology: Regional Studies*, 58, 102262. <https://doi.org/10.1016/j.ejrh.2025.102262>
- Sofia Florencia, G. G., Enrique Alejandro, S., Janinna, F., Miriam, E., Matías, P., Oscar Daniel, S., María Gabriela, Q., & Juan, R. (2025). Against the flow: Flooding and its impact on phlebotomine bionomics in the Chaco region, Argentina. *Acta Tropica*, 270, 107797. <https://doi.org/10.1016/j.actatropica.2025.107797>
- Sumon, K. A., Kanok, N. J. R., Sadat, Md. A., Mainuddin, M., Wahid, S. M., & Karim, F. (2025). A comprehensive review on the negative impacts on Sundarbans fisheries: Insights from the hydrological changes modulated by climate change and anthropogenic

- activities. *Marine Pollution Bulletin*, 220, 118409. <https://doi.org/10.1016/j.marpolbul.2025.118409>
- Torres, E., Maskey, S., Corzo, G., Uijlenhoet, R., & Solomatine, D. (2025). Spatial and temporal analysis of changes in hydrological fluxes and their relation to deforestation in the Madeira River basin. *Journal of Hydrology: Regional Studies*, 61, 102680. <https://doi.org/10.1016/j.ejrh.2025.102680>
- Tuan, N. T. (2025). Forest land use change impacts on carbon stocks: Perspectives from the Northern mountainous region, Vietnam. *Environmental and Sustainability Indicators*, 28, 100978. <https://doi.org/10.1016/j.indic.2025.100978>
- Turetta, A. P. D., Távora, G. G., Fidalgo, E. C. C., Montalvão, M. T. L., Prado, R. B., Moster, C., Pedreira, B. da C., Monteiro, J. M. G., & Martins, A. L. da S. (2025). Assessing food, water, and energy security in the Atlantic Forest region of Brazil through the nexus approach. *Environmental and Sustainability Indicators*, 26, 100706. <https://doi.org/10.1016/j.indic.2025.100706>
- Wang, F., Tharaud, M., Piñeiro, A. M., & Benedetti, M. F. (2025). Colloidal and nanoparticle transport in a temperate river system: Hydrological controls and geochemical signatures in the Seine Basin. *Chemical Geology*, 694, 123025. <https://doi.org/10.1016/j.chemgeo.2025.123025>
- Wang, M., Jiang, S., Ren, L., Cui, H., Yuan, S., Xu, J., & Xu, C.-Y. (2025). Attribution of streamflow and its seasonal variation to dual nature-society drivers using CMIP6 data and hydrological models. *Journal of Hydrology*, 659, 133314. <https://doi.org/10.1016/j.jhydrol.2025.133314>
- Wu, R., Dai, Z., Mei, X., Luo, J., & Fagherazzi, S. (2025). Profiling of mangrove forest dynamics in the Fly River delta, Papua New Guinea. *Marine Pollution Bulletin*, 217, 118119. <https://doi.org/10.1016/j.marpolbul.2025.118119>
- Ye, H., Tang, F., Zhang, H., Chen, Y., Huang, L., Hu, J., Huang, C., & Huang, T. (2025). Stoichiometric insights into sediment carbon, nitrogen, and phosphorus deposition in small forest reservoirs in southeast China under forest conversion and climate change. *CATENA*, 250, 108741. <https://doi.org/10.1016/j.catena.2025.108741>

Copyright Holder :

© Nguyen Tuan Anh et.al (2025).

First Publication Right :

© Journal of Selvicoltura Asean

This article is under: